

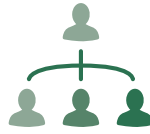


A FAMILY OF CHURCHES | MAKING A GOSPEL-SHAPED DIFFERENCE

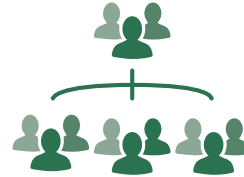


34,951

AVERAGE
WEEKLY
ATTENDANCE
IN WORSHIP



5740
DISCIPLE-MAKING
LEADERS^{2 3}



2443
DISCIPLE-MAKING
GROUPS^{2 4}

45
ALL PEOPLE
MINISTRIES

IN
30
NCD
CHURCHES²



11
AVERAGE
NUMBER OF
MISSIONARIES
PER CHURCH

3
AVERAGE
NUMBER OF
REACHGLOBAL
MISSIONARIES
PER CHURCH

512
SHORT TERM
MISSION TRIPS
IN THE LAST
THREE YEARS²



59
SABBATICALS
IN LAST THREE YEARS²



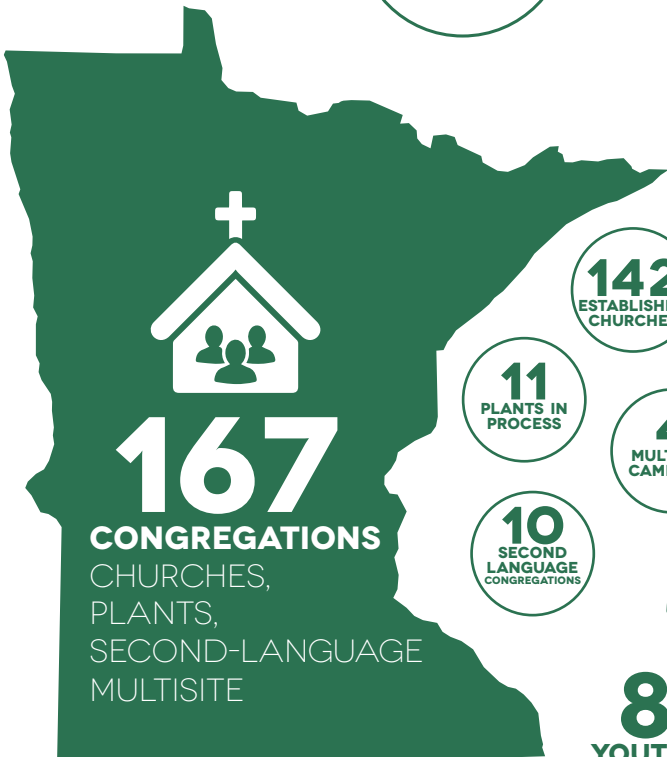
63
CHURCHES
ACTIVELY INVESTING IN
CHURCH PLANTING



44
CREDENTIALS
ISSUED
IN LAST THREE YEARS



7
CHURCH PLANTS
IN LAST THREE YEARS



142
ESTABLISHED
CHURCHES

11
PLANTS IN
PROCESS

4
MULTISITE
CAMPUSES

10
SECOND
LANGUAGE
CONGREGATIONS



2414
STUDENTS
AT DISTRICT BLITZ

1741 FROM **56** EFCA CHURCHES

673 FROM **31** CONVERGE CHURCHES



44%

OF LEAD PASTORS HOLD
AN EFCA CREDENTIAL

77%
CHURCHES
GIVE TO THE DISTRICT

146
INDIVIDUAL
DONORS

\$773,817
IN TOTAL GIVING



85%
YOUTH MINISTERS
CONSISTENTLY PARTICIPATE IN
NCD YOUTH NETWORKS



**CAMP
SHAMINEAU**

10,016
CAMPERS

1016
SPIRITUAL
DECISIONS

¹ 2018 data, reported in 2019 (93 churches reporting).

² Reported in 2018 or 2019 (110 churches total, includes prior-year figures for churches who did not report in 2019)

³ A disciple-making leader is a person who leads others to trust, walk with, or serve Jesus Christ.

⁴ A disciple-making group is any group or ministry that helps people trust, walk with, or serve Jesus Christ.