

A FAMILY OF CHURCHES | MAKING A GOSPEL-SHAPED DIFFERENCE



26,822

AVERAGE
**WEEKLY
WORSHIP
ATTENDANCE**
(IN PERSON)



24%
ESTIMATED
ADDITIONAL
WEEKLY ONLINE
ATTENDANCE

743
BAPTISMS
IN 2021



5,193
DISCIPLE-MAKING
LEADERS²



2,472
DISCIPLE-MAKING
GROUPS³

23
ALL PEOPLE
MINISTRIES

IN
17
NCD
CHURCHES



9
AVERAGE
NUMBER OF
MISSIONARIES
SUPPORTED PER
CHURCH

4
AVERAGE NUMBER
OF **REACHGLOBAL**
MISSIONARIES
SUPPORTED PER
CHURCH

4
CURRENTLY
LIVE IN THE
UNITED
STATES

81
SHORT TERM
MISSION TRIPS
IN 2021



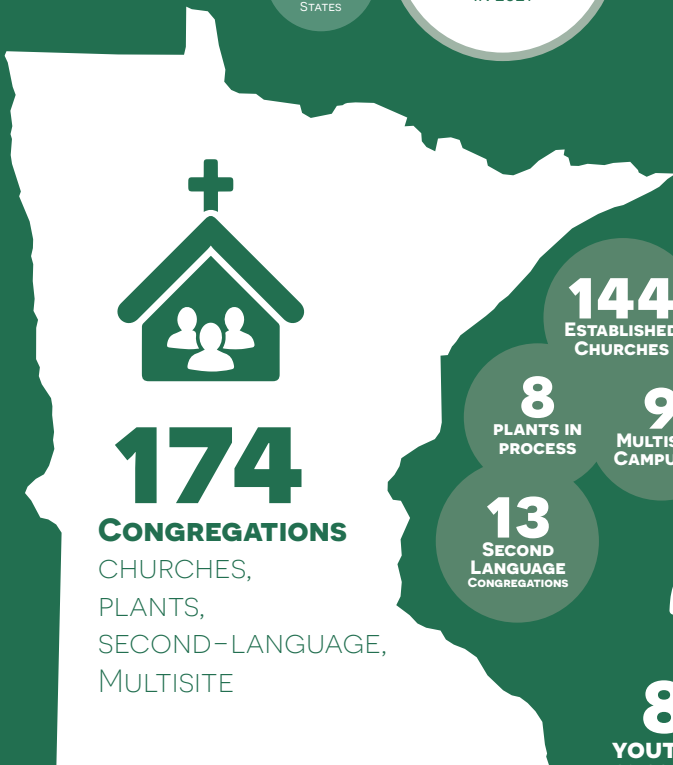
11
**SENDING
CHURCHES⁴**
IN THE LAST 3 YEARS

11

24
SABBATICALS
IN 2021



61
CREDENTIALS
ISSUED
IN LAST THREE YEARS



2,499
STUDENTS
AT DISTRICT BLITZ

1,727 FROM **65** NCD
CHURCHES

144
ESTABLISHED
CHURCHES

8
PLANTS IN
PROCESS

9
MULTISITE
CAMPUSES

13
SECOND
LANGUAGE
CONGREGATIONS



61%
LEAD PASTORS WITH
AN EFCA CREDENTIAL



73%
OF CHURCHES
GIVE TO THE DISTRICT



146
INDIVIDUAL
DONORS

\$834,149

TOTAL GIVING IN 2020-21
(LAST COMPLETE
FISCAL YEAR)



85%
YOUTH MINISTERS
CONSISTENTLY PARTICIPATE IN
NCD YOUTH NETWORKS



11 NCD CHURCHES HAVE A
FAITH COMMUNITY NURSE
THROUGH CASSIA/ELIM CARE

¹ 2021 data, reported in 2022 (119 churches reporting, some historical data used where reliable).

² A disciple-making leader is a person who leads others to trust, walk with, or serve Jesus Christ.

³ A disciple-making group is any group or ministry that helps people trust, walk with, or serve Jesus Christ.

⁴ A sending church is the local congregation that starts and oversees an NCD church plant.